

DEEPTEX MAHARANI VOL 66 - Dress Material

No Of Pieces: 26 Pieces

Brand: DEEPTEX PRINTS

Type: Unstitched Material /Only fabrics

Top Fabric: Pure Heavy Cotton Printed 2.50 meters approx

Bottom Fabric: Pure Heavy Cotton Printed 2.50 meters approx

Dupatta Fabric: Pure Cotton Mal Mal printed 2.25 meters approx

Packing: Bag Packing

Season: All seasons

Occasions: Formal Dailywear

Weight: 20 KG



DEEPTEX[®]
P R I N T S



DEEPTEX
P.R.I.N.T.S



6622


DEEPTEX
PRINTS



6624



DEEPTEX
PRINTS



6606



DEEPTEX
PRINTS



6620



DEEPTEX
PRINTS



6604



DEEPTEX
PRINTS



6608



Miss India
the eternal beauty...
Maharani
the fashion queen...


DEEPTEX[®]
PRINTS
VOL.66



DEEPTEX
PRINTS



6619



DEEPTEX
PRINTS



6601



DEEPTEX
PRINTS



6621



DEEPTEX
PRINTS



6612



DEEPTEX
PRINTS



6623



DEEPTEX
PRINTS



6613



DEEPTEX
PRINTS

6603



DEEPTEX
PRINTS



6626



DEEPTEX
PRINTS



6616



DEEPTEX
PRINTS



Shweta Tiwari

Shweta Tiwari
(TV Actress)

*The leading Lady of
Mere Dad Ki Dulhan*

Lots of Love

Disha Parmar

Disha Parmar
(TV Actress)

*The leading Lady of
Woh Apna Sa*



DEEPTEX
PRINTS



6615



DEEPTEX
PRINTS



6618



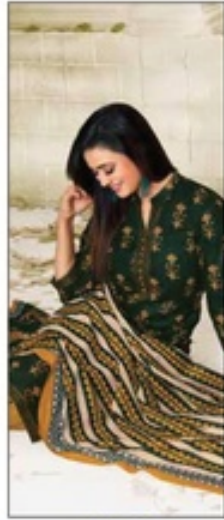
DEEPTEX
PRINTS



6602



6601



6602



6603



6604



6605



6606



6607



6608



6609



6610



6611



6612



6613



6614



DEEPTEX
PRINTS



6611



DEEPTEX
PRINTS



6607



DEEPTEX
PRINTS



6610



DEEPTEX
PRINTS



6625



DEEPTEX
PRINTS



6614



6615



6616



6617



6618



6619



6620



6621



6622



6623



6624



6625



6626


DEEPTEX
PRINTS
Vol 66



DEEPTEX
PRINTS



6605



DEEPTEX
PRINTS



6609



DEEPTEX
PRINTS



6617