

# **SURYAJYOTI PRINCESS VOL 16 - Dress Material**

**No Of Pieces:** 10 Pieces

**Brand:** SURYAJYOTI

**Type:** Unstitched Material /Only fabrics

**Top Fabric:** Heavy Rayon Printed 2.50 meters approx

**Bottom Fabric:** Heavy Semi Lawn 2.50 meters approx

**Dupatta Fabric:** Pure Chiffon Printed 2.25 meters approx

**Packing:** Single Pieces Pouch + 1 Leather Bag Catalogue pack

**Occasions:** Casual Wear

**Season:** All seasons

**Weight:** 10 KG



*Suryajyoti*®  
Dresses (Other Salwar Suits)



16008

16008





*Suryajyoti*®  
Dress for All Seasons



16002

Handwritten signature and decorative flourish on the left side of the page.



16001



16002



16003

**Suryajyoti**  
Drapes of India



16007



16008

Handwritten text in a decorative vertical frame on the left side of the image.



16001





*Suryajyoti*®  
Designer Cotton Salwar Suits

# PRINCESS

VOL-16



16004



16005



16006



16009



16010

**PRINCESS**  
VOL-16

**Suryajyoti**<sup>®</sup>  
Delicate Cotton Sarees Suits



16004 *style it to suit - look of joy of the all-time - the - it has all-time - you - perfect!*



**Suryajyoti**®  
*Dispersed Cotton Salwar Suits*



**Suryajyoti**<sup>®</sup>  
*Designer Ethnic Sarees Suits*



16010

**Suryajyoti**®  
Dipam Cakra Salawa Suta



**Suryajyoti**®  
Designer Cotton Salwar Suits

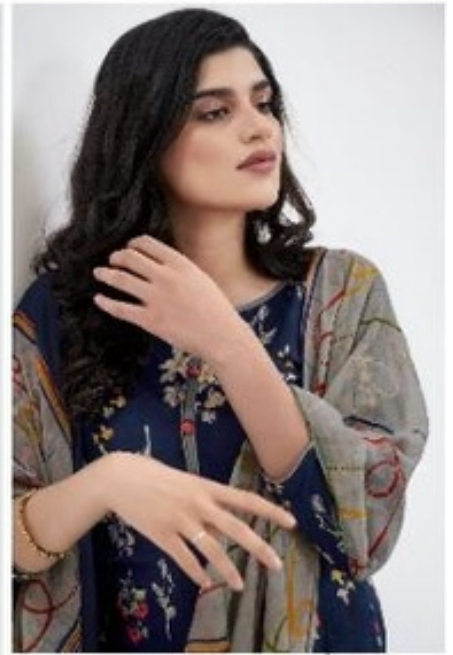


*Handwritten text in Devanagari script, likely a brand slogan or description, running vertically along the right side of the page.*





**PRINCESS**  
VOL-16



16006

Hand-drawn illustration of a stylized flower with a long stem and leaves, positioned vertically.





*Long sleeve red dress with green shawl*

16007







16009



**Suryajyoti**<sup>®</sup>  
*Designs Extra Salwar Suits*



16008



Handwritten text in a decorative font, possibly a signature or brand name, running vertically along the left side of the image.

16003



16005



When the world is broken, it is a gift of the universe.







**Suryajyoti**®  
*Draper Culture Salwar Suits*



