

BALAJI LOTUS VOL 1 - Dress Material

No Of Pieces: 12 Pieces

Brand: BALAJI COTTON

Type: Unstitched Material Premium Embroidery Work Collection

Top Fabric: Pure Heavy Cotton Printed 2.50 meters approx with fancy work

Bottom Fabric: Pure Heavy Cotton Printed 2.50 meters approx

Dupatta Fabric: Pure Cotton Mal Mal fancy printed 2.25 meters approx

Packing: Pouch + Bag

Occasions: Casual Wear Dailywear

Season: Summer winter, All seasons

Weight: 10 KG



1818@balajicottons.com | www.balajicottons.com

◆◆ Complimentary Copy Not For Sale ◆◆



“WHAT MAKES A WOMAN BEAUTIFUL
is how she dress and carry herself.”





BALAJI™
Cotton
Designer Saree Suit

LOTUS
CODE-1010

 **BALAJI**TM
Cotton
Designer Saree Suit

LOTUS
CODE-1008






BALAJITM
Cotton
Designer Salwar Suit

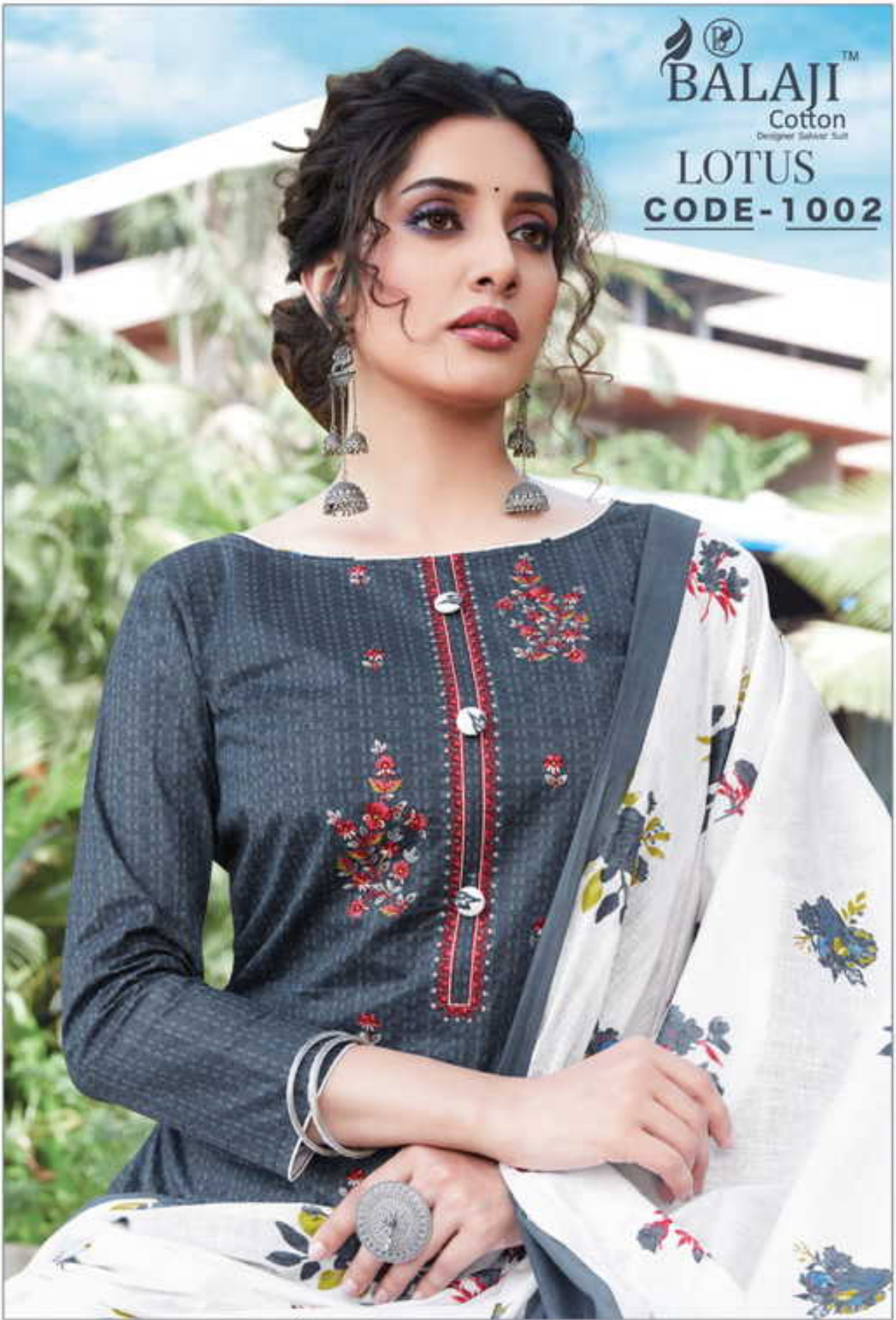


LOTUS
Vol-1
Premium work Collection




BALAJITM
Cotton
Designer Saree Suit

LOTUS
CODE-1002






BALAJITM
Cotton
Designer Cottons

LOTUS
CODE-1001




BALAJITM
Cotton
Designer Saree Suits

LOTUS
CODE-1009

special
EDITION





Timeless
TRADITION
FESTIVE PREMIUM COLLECTION



 **BALAJI**™
Cotton
Designer Saree Line
LOTUS
CODE-1006



special
EDITION





CODE-1001



CODE-1002



CODE-1003



CODE-1004



CODE-1005



CODE-1006



CODE-1007



CODE-1008



CODE-1009



CODE-1010



CODE-1011



CODE-1012





Timeless
TRADITION
FESTIVE PREMIUM COLLECTION



LOTUS



Style is very personal it has nothing
to do with fashion.
fashion is over quickly
style is forever...


BALAJITM
Cotton
Designer Saree Suit

LOTUS
CODE-1007




BALAJITM
Cotton
Designer Tahwar Suit
LOTUS
CODE-1005




BALAJI
Cotton
LOTUS
CODE-T003




BALAJITM
Cotton
Designer Summer Suit

LOTUS
CODE-1012



 **BALAJI**TM
Cotton
Designer Salwar Suit

LOTUS
CODE-1004






BALAJITM
Cotton
Designer Sareer Suit

LOTUS
CODE-1011

