

GANPATI SHAAN E HIND STITCHED VOL 1 - Dress Material

No Of Pieces: 15 Pieces

Brand: GANPATI COTTON SUITS

Type: Stitched(Readymade) Without Lining (L,XL,XXL) 3xl-10 rs extra

Top Fabric: Pure Heavy Cotton Printed Full stitched(L,XL,XXL) 3XL 10 RS EXTRA

Bottom Fabric: Pure Heavy Cotton Printed Free size stitched patiyala

Dupatta Fabric: Pure Cotton Mal Mal Approx 2.25 meters

Top Length: 36-38 C.M Approx

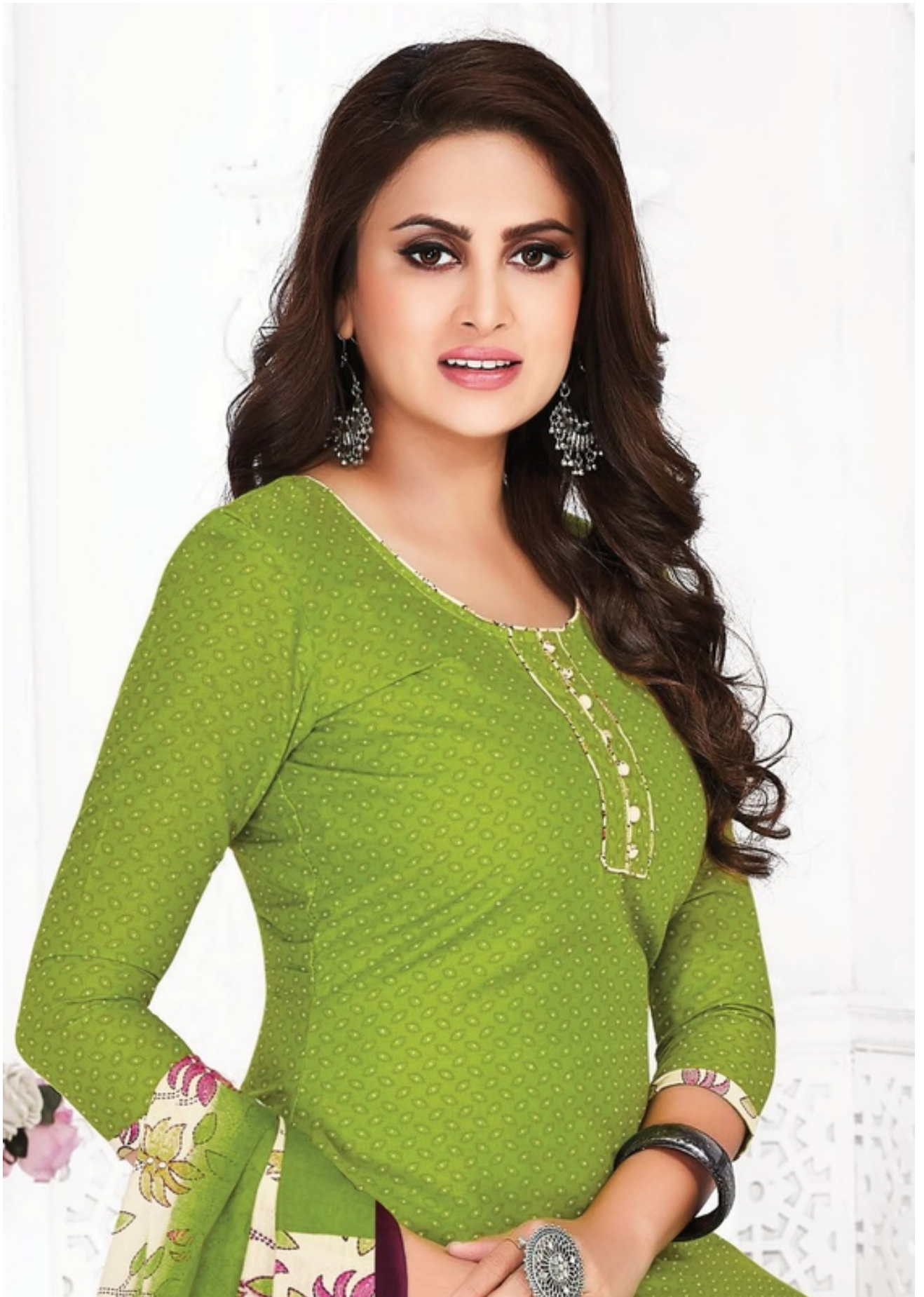
Packing: Pouch Packing per pieces

Season: Summer All season

Occasions: Formal Dailywear

Weight: 12 KG

Size: L,XL,XXL,XXXL




Ganpati
COTTON SUIT
Shaan-E-Hind
1259




Ganpati
COTTON SUIT
Shaan-E-Hind
1266




Ganpati
COTTON SUIT
Shaan-E-Hind
1262




Ganpati
COTTON SUIT
Shaan-E-Hind
1255






Ganpati
COTTON SUIT
Shaan-E-Hind
1260




Ganpati
COTTON SUIT
Shaan-E-Hind
1257





Ganpati
COTTON SUIT

SHAAN-E-HIND

STITCHED PATIYALA WITH MASK





Ganpati
COTTON SUIT
Shaan-E-Hind
1277






Ganpati
COTTON SUIT
Shaan-E-Hind
1256




Ganpati
COTTON SUIT
Shaan-E-Hind
1263






Ganpati
COTTON SUIT
Shaan-E-Hind
1265





1253



1254



1255



1256



1257



1258



1259



1260



1262



1263



1264



1265



1266



1277



1278



Ganpati

 COTTON SUIT

Shaan-E-Hind

 Stitched Patiyala

 with Mask




Ganpati
COTTON SUIT
Shaan-E-Hind
1254




Ganpati
COTTON SUIT
Shaan-E-Hind
1264




Ganpati
COTTON SUIT
Shaan-E-Hind
1258




Ganpati
COTTON SUIT
Shaan-E-Hind
1253




Ganpati
COTTON SUIT
Shaan-E-Hind
1278

