

# **SB TRENDS KUDI PATOLA - Dress Material**

**No Of Pieces:** 10 Pieces

**Brand:** SB TRENDS

**Top Fabric:** Pashmina Butti Print Approx 2.50 Meter

**Bottom Fabric:** Pashmina Dyed Approx 3.00 Meters

**Dupatta Fabric:** Pashmina Print Shawl Approx 2.25 Meters

**Fabric:** Pashmina

**Season:** Winter

**Type:** Unstitched Material

**Weight:** 8 KG



*The new attitude*

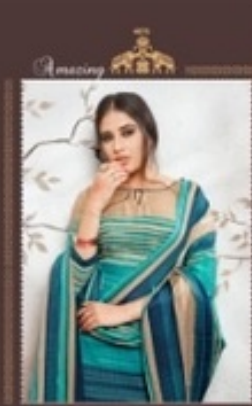
T h e n e w a t t i t u d e



4072







4076



4077



4078

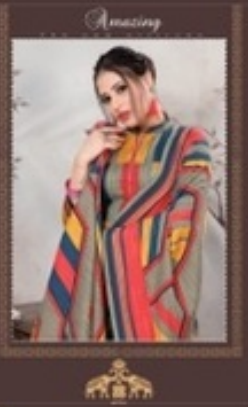


4079



4080





4071



4072



4073



4074



4075





4077



KUDI  
**PATOLA**



*New desgins*

*love forever*

Brought up printed with an array of  
floral, it was back to soft surface that will take  
you through the season in style.

4073





4078

*New designs*  
*love forever*

Brighten up yourself with an array of  
Pieces to meet behind an wall surface that will take  
you through the season in style.





To be the best, you have to look your very best. First impression is the last impression. Wear the delightful dresses in this catalogue which may allure opportunities your way. The best of the designers have put in all their efforts on these pieces.





KUDI  
**PATOLA**







KUDI  
**PATOLA**





KUDI  
**PATOLA**









KUDI  
**PATOLA**





*Amazing*

*The new attitude*



4071





4076

Amazing



Fashion is a term comenty used to describe a style of clothing worm by most of the people of a country



4080





KUDI  
**PATOLA**



# Stylish elegance

Fashion is a term commonly used to describe a style of clothing worn by most of the people of a country



KLEDI  
**PATOLA**



4079







*Stylized*  
*embellished picks*

Tradition in design, the best combined with modern style will do wonders to give other look. The attractive work all over the saree makes it just hard to miss. This beautiful saree will allow you to stay comfortable like a cool party.



4074







KUDI  
**PATOLA**





# beauty winds

Classy & attractive, this pink and white coloured saree is party simply irresistible. While the striking design makes this hand work saree more appealing, the classic fabric makes it more beautiful and easy to carry.

4075







KUDI  
**PATOLA**



KUDI  
**PATOLA**

