

MF SONI KUDI VOL 5 - Dress Material

No Of Pieces: 12 Pieces

Brand: MF

Top Fabric: Pure Heavy Cotton Printed Approx 2.00 Meters

Bottom Fabric: Pure Heavy Cotton Printed Approx 2.40 Meters

Dupatta Fabric: Pure Heavy Cotton Printed Approx 2.00 Meters

Fabric: Pure Heavy Cotton

Type: Unstitched Material

Packing: Hanger

Weight: 9 KG



Soni Kudi
VARIETY

of colors and intricate patterns that would "stand apart"





THE MOST EFFEMINATE DRESSES TO BRING OUT THE DIVA IN YOU.

Soni Kudi

505





THE MOST EFFEMINATE DRESSES TO BRING OUT THE DIVA IN YOU.



THE MOST EFFEMINATE DRESSES TO BRING OUT THE DIVA IN YOU.

Soni Kudi

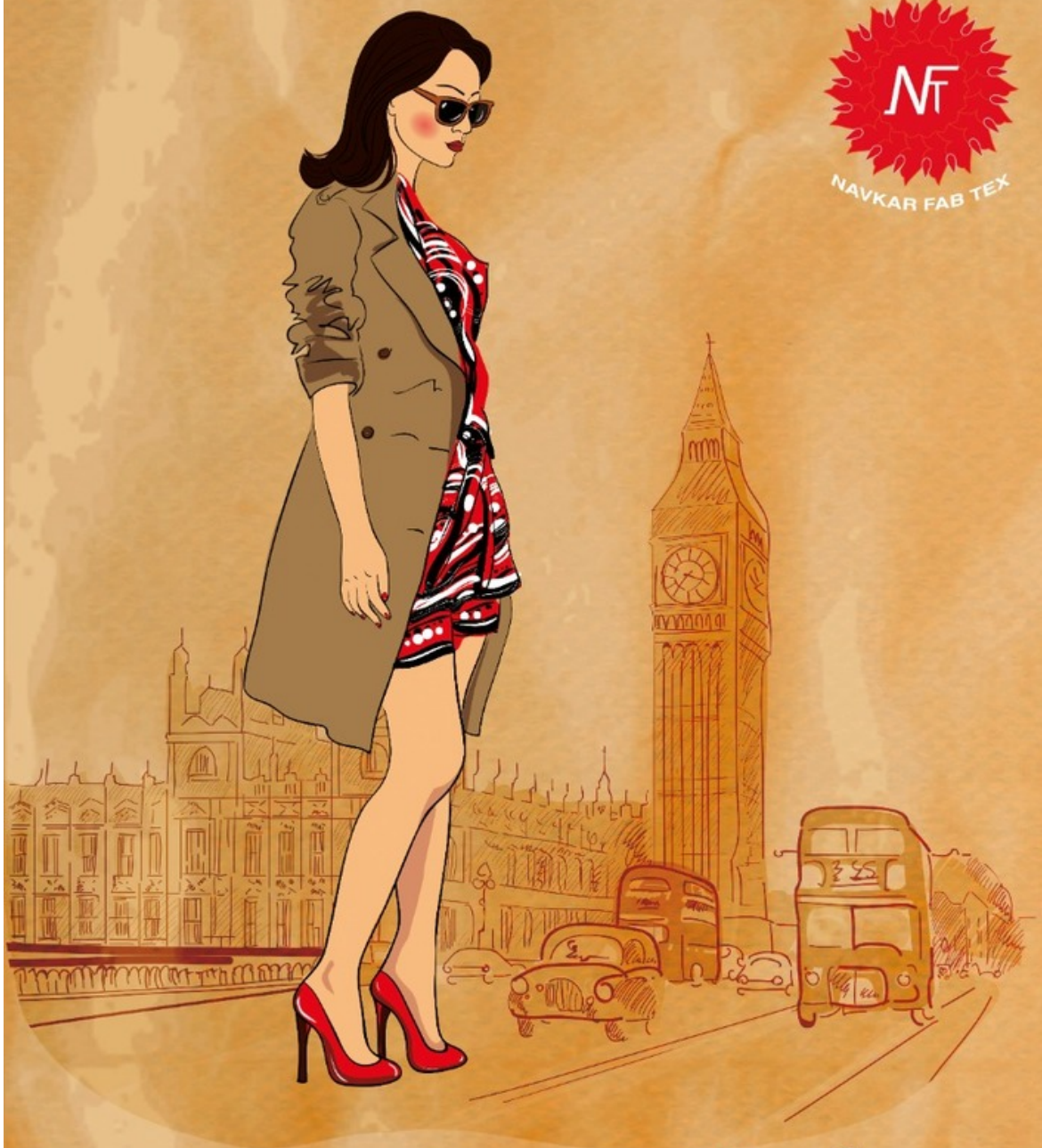
508



Soni Kudi

512





Soni Kudi
VOL-5
Patiyala Special

Soni Kudi

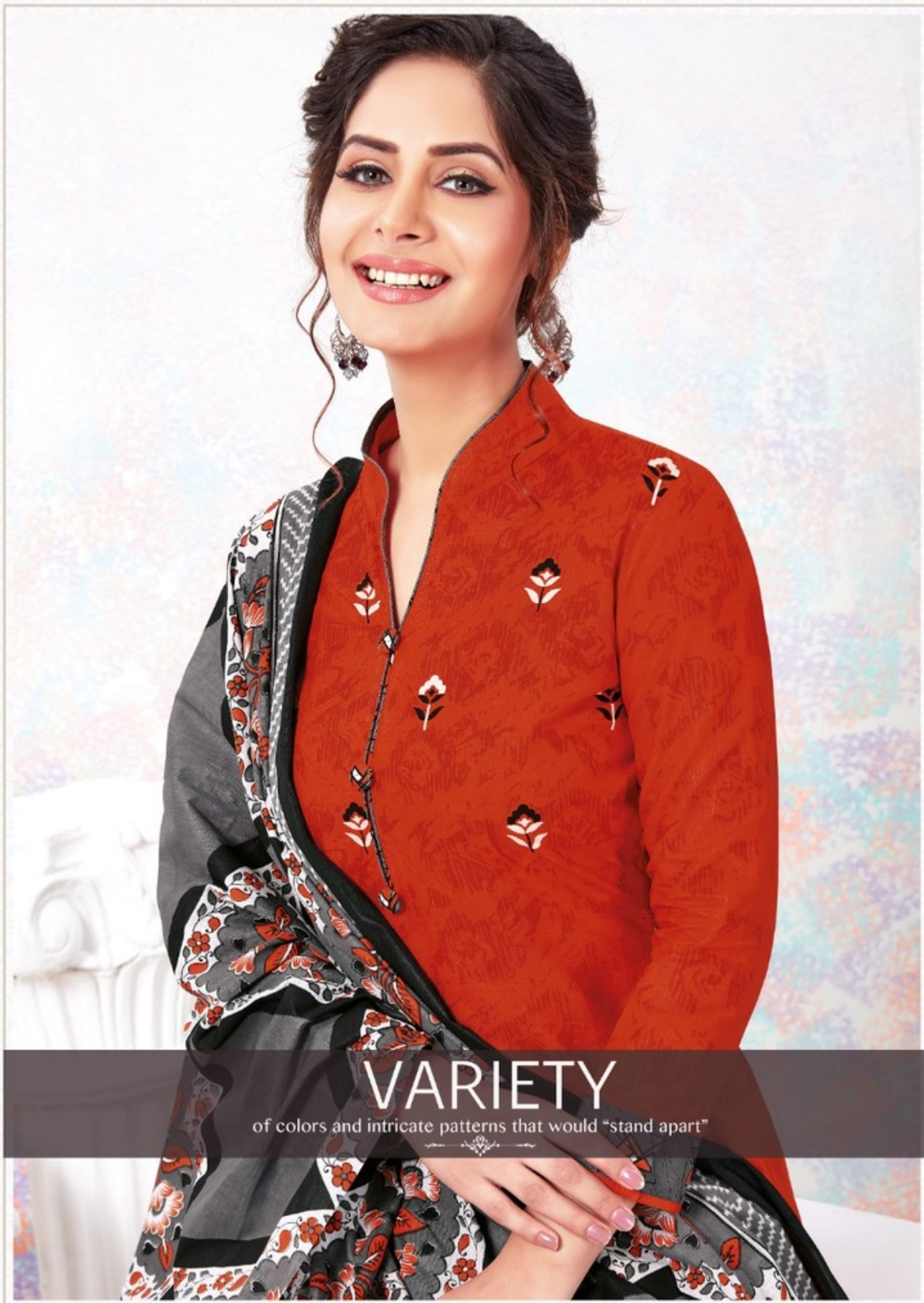
510



Soni Kudi

511





VARIETY

of colors and intricate patterns that would "stand apart"

Soni Kudi

504



Soni Kudi

503



Soni Kudi

502



Soni Kudi

509



Soni Kudi

501





501



502



503



504



505



506



507



508



509



510



511



512

Soni Kudi
VOL-5
Patiyala Special

Soni Kudi

506



Soni Kudi

507

